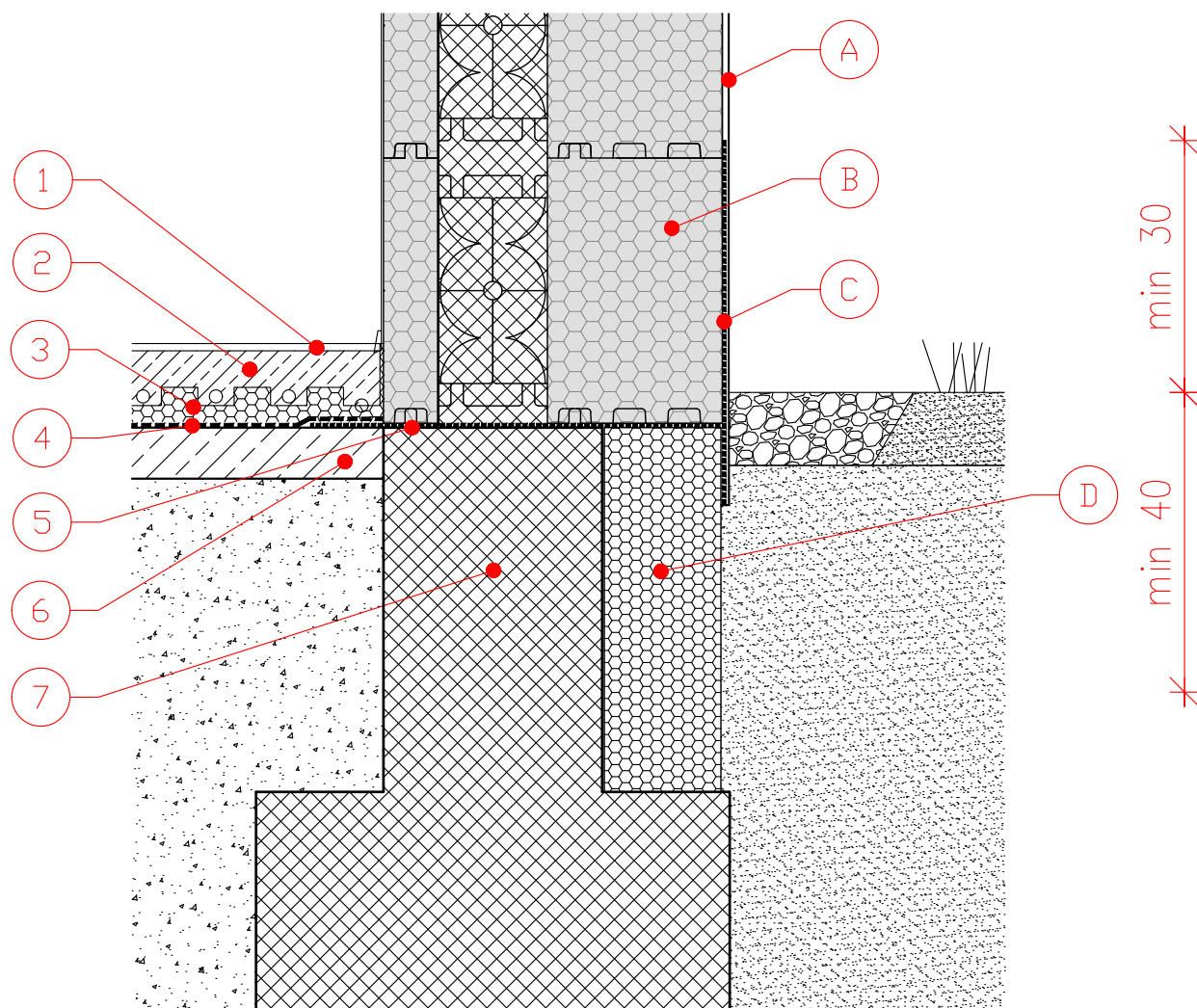


JUBHOME WALL TO STRIP FOUNDATION CONNECTION

S 1:10



1. FLOORING
2. SCREED
3. EUROTHERM STIROTAL SILENT 2,2 + 2,5
4. HORIZONTAL WATERPROOFING
5. HYDOSOL CEMENTITIOUS WATERPROOFING
6. BLINDING CONCRETE
7. STRIP FOUNDATION

- A. JUBIZOL RENDER (BASE COAT + FINISHING COAT)
- B. JUBHome WALL 390/465
- C. HYDOSOL CEMENTITIOUS WATERPROOFING
- D. EUROTHERM EPS F-STRONG-S0 glued to the strip foundation