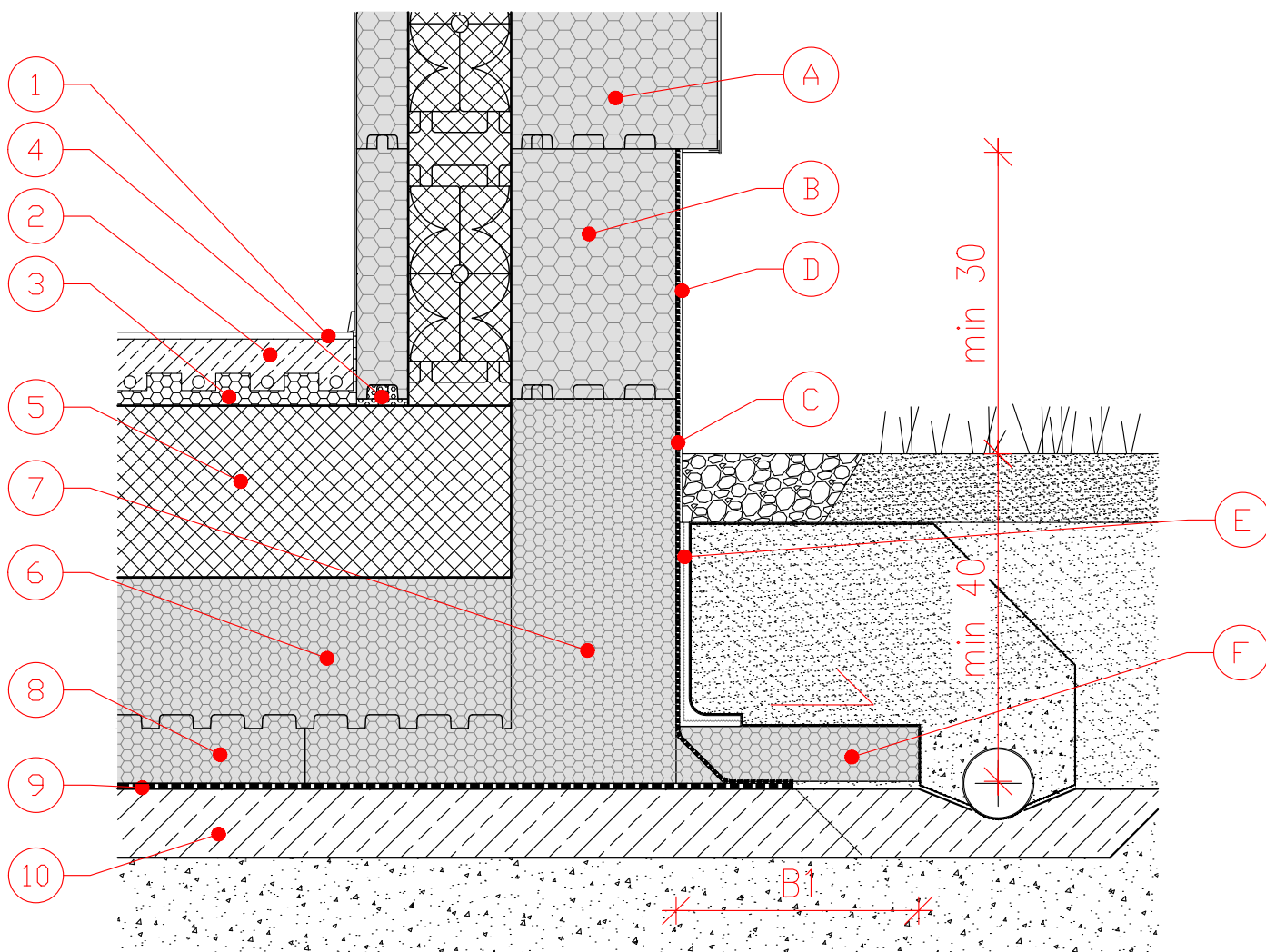


JUBHOME WALL TO JUBHOME BASE IN CASE OF GROUND MOISTURE - PLINTH

S 1:10



1. FINAL FLOOR LINING
2. CEMENT-SAND SCREED
3. EUROTHERM STIROTAL SILENT 2,2 + 2,5 cm
4. LOW EXPANSION PU FOAM
5. RC RAFT FOUNDATION, THICKNESS UP TO 30 cm
6. JUBHome BASE UPPER LAYER FLOOR ELEMENT, D= 8, 16 or 22 cm
7. JUBHome BASE EDGE ELEMENT
8. JUBHome BASE LOWER LAYER FLOOR ELEMENT, D= 8 cm
9. PLASTOMER BITUMEN WATERPROOFING, 0.4 cm
10. BLINDING CONCRETE

- A. JUBHome WALL 525
- B. JUBHome WALL 465
- C. HIDROZOL SUPERFLEX, TOTAL THICKNESS: 0.3 cm
- D. KULIRPLAST or A FINISHING FACADE RENDER (ACRYL / SILICON / SILICON NANO)
- E. PROTECTIVE STUDDED MEMBRANE
- F. EUROTHERM EPS F STRONG ELEMENTS, THICKNESS: 6 or 8 cm