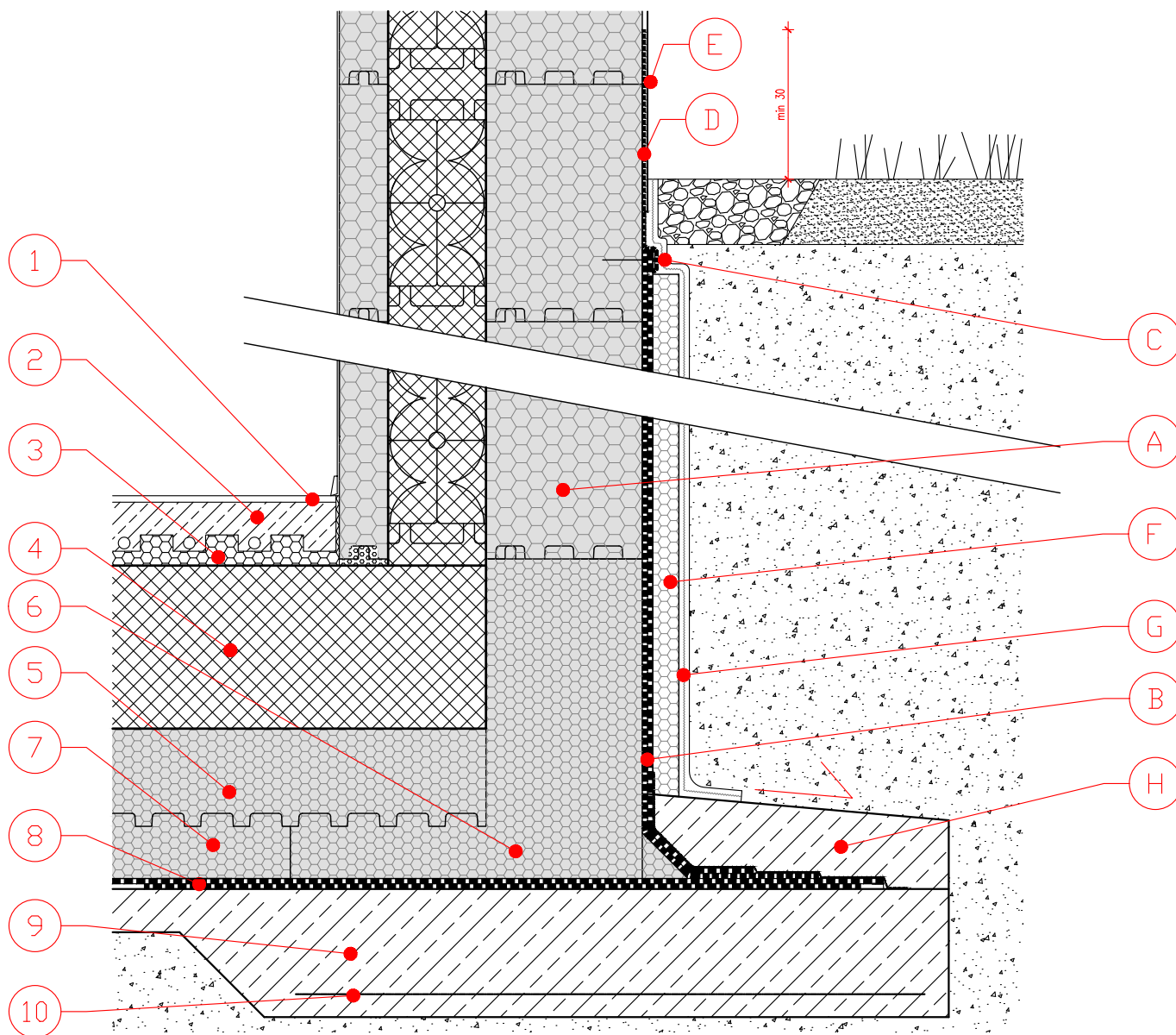


JUBHOME BASEMENT WALL TO JUBHOME BASE IN CASE OF GROUND WATER

S 1:10



- | | |
|---|---|
| 1. FINAL FLOOR LINING | A. JUBHome WALL 465 |
| 2. CEMENT- SAND SCREED | B. DOUBLE LAYER OF BITUMEN WATERPROOFING 2 x 0.4 cm (ON A BASE COAT OF EPS ADHESIVE MORTAR) |
| 3. EUROTERM STIROTAL SILENT, 2.2 + 2.5 cm | C. RF OR PE LATH FIXED BY MEANS OF $\varnothing 8$ SCREWS |
| 4. RC RAFT FOUNDATION, THICKNESS UP TO 30 cm | D. HIDROZOL SUPERFLEX, TOTAL THICKNESS: 0.3 cm |
| 5. JUBHome BASE UPPER LAYER FLOOR ELEMENT, D= 8, 16 or 22 cm | E. KULIRPLAST or A FINISHING FACADE RENDER (ACRYL / SILICON / SILICON NANO) |
| 6. JUBHome BASE EDGE ELEMENT | F. EUROTERM EPS F STRONG ELEMENTS, THICKNESS: 6 or 8 cm |
| 7. JUBHome BASE LOWER LAYER FLOOR ELEMENT, D= 8 | G. SLIDING LAYER - REVERSED STUDDED MEMBRANE |
| 8. DOUBLE LAYER OF BITUMEN WATERPROOFING 2 x 0.4 cm (ON A BASE COAT OF EPS ADHESIVE MORTAR) | H. PROTECTIVE LAYER OF CONCRETE |
| 9. BLINDING CONCRETE | |
| 10. REINFORCEMENT MESH | |