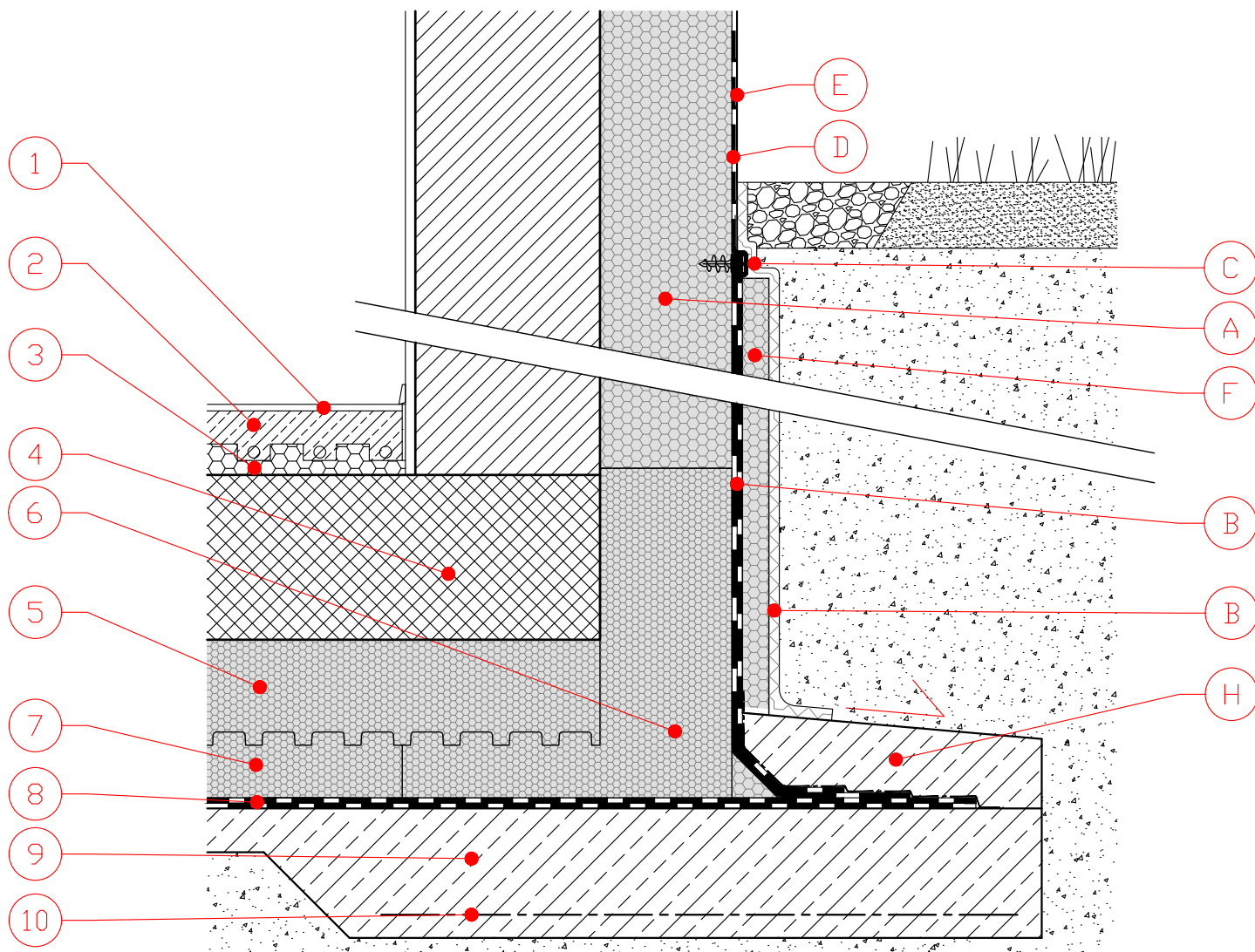


## CONCRETE BLOCK BASEMENT WALL TO JUBHOME BASE IN CASE OF GROUND WATER

S 1:10



- |  |   |
|--|---|
| 1. FINAL FLOOR LINING  | A. EUROTERM EPS F STRONG  |
| 2. CEMENT- SAND SCREED                                       | B. DOUBLE LAYER OF BITUMEN WATERPROOFING 2 x 0.4 cm (ON A BASE COAT OF EPS ADHESIVE MORTAR) |
| 3. EUROTERM STIROTAL SILENT, 2.2 + 2.5 cm                    | C. RF OR PE LATH FIXED BY MEANS OF ø8 SCREWS  |
| 4. RC RAFT FOUNDATION, THICKNESS UP TO 30 cm                 | D. HIDROZOL SUPERFLEX, WITH A TOTAL THICKNESS OF 0.3 cm                                     |
| 5. JUBHome BASE UPPER LAYER FLOOR ELEMENT, D= 8, 16 or 22 cm | E. KULIRPLAST or A FINISHING FACADE RENDER (ACRYL / SILICON / SILICON NANO)                 |
| 6. JUBHome BASE EDGE ELEMENT, l=8 cm, CUT                    | F. EUROTERM EPS F STRONG ELEMENTS, OF THICKNESS 3 cm  |
| 7. JUBHome BASE LOWER LAYER FLOOR ELEMENT, D= 8              | G. SLIDING LAYER - REVERSED STUDDED MEMBRANE  |
| 8. DOUBLE LAYER OF BITUMEN WATERPROOFING, 2 x 0.4 cm         | H. PROTECTIVE LAYER OF CONCRETE   |
| 9. BLINDING CONCRETE   |   |
| 10. REINFORCEMENT MESH                                       |   |