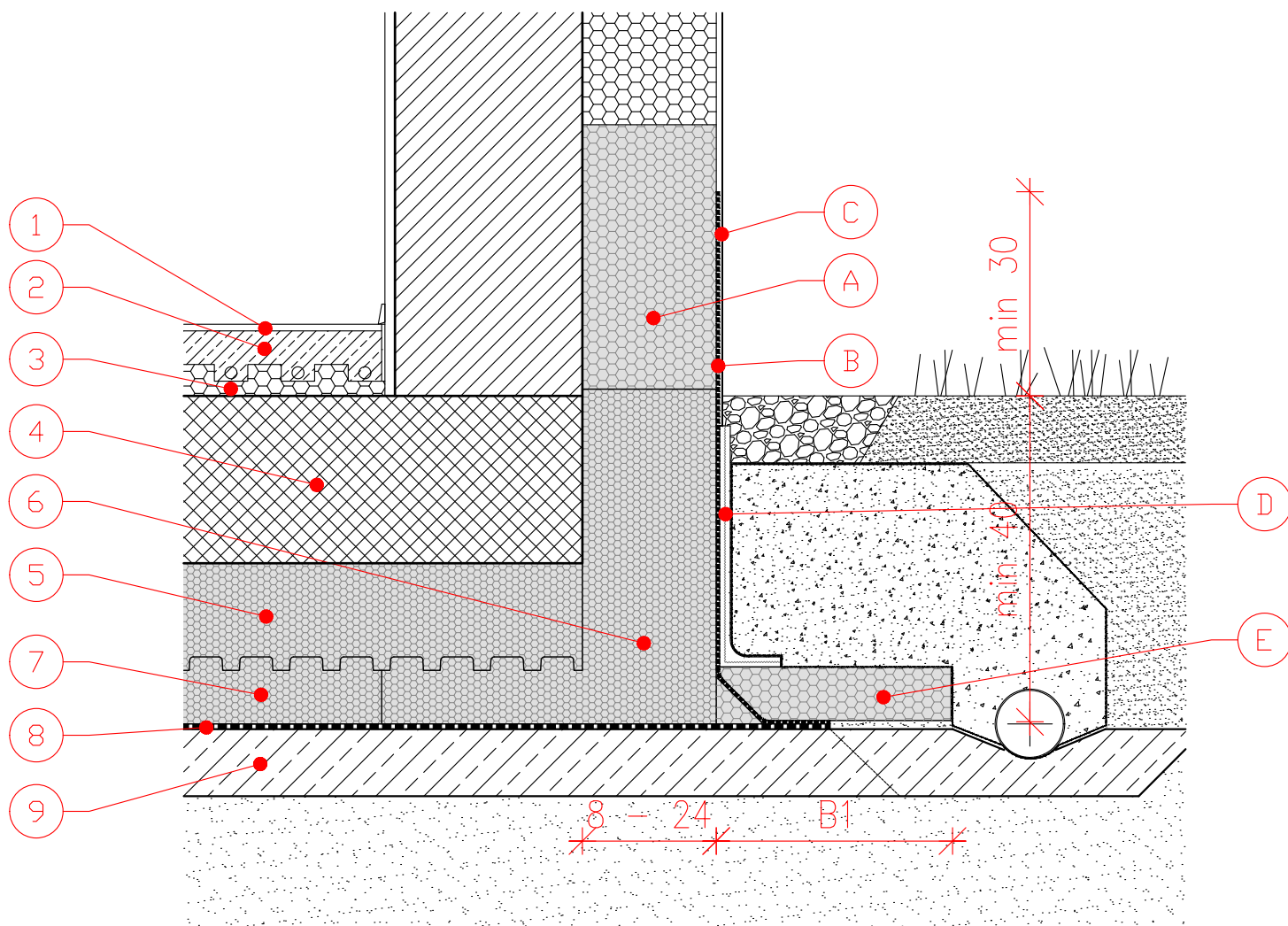


BRICK WALL TO JUBHOME BASE IN CASE OF GROUND MOISTURE

S 1:10



- | | |
|--|---|
| 1. FINAL FLOOR LINING | A. EURO THERM EPS F STRONG |
| 2. CEMENT- SAND SCREED | B. HIDROZOL SUPERFLEX, WITH A TOTAL THICKNESS OF 0.3 cm |
| 3. EURO THERM STIROTAL SILENT, 2.2 + 2.5 cm | C. KULIRPLAST or A FINISHING FACADE RENDER (ACRYL / SILICON / SILICON NANO) |
| 4. RC RAFT FOUNDATION, THICKNESS UP TO 30 cm | D. PROTECTIVE STUDDED MEMBRANE |
| 5. JUBHome BASE UPPER LAYER FLOOR ELEMENT, D= 8, 16 or 22 cm | E. EURO THERM EPS F STRONG, 8 cm |
| 6. JUBHome BASE EDGE ELEMENT | |
| 7. JUBHome BASE LOWER LAYER FLOOR ELEMENT, D= 8 | |
| 8. PLASTOMER BITUMEN WATERPROOFING, 0.4 cm | |
| 9. BLINDING CONCRETE | |