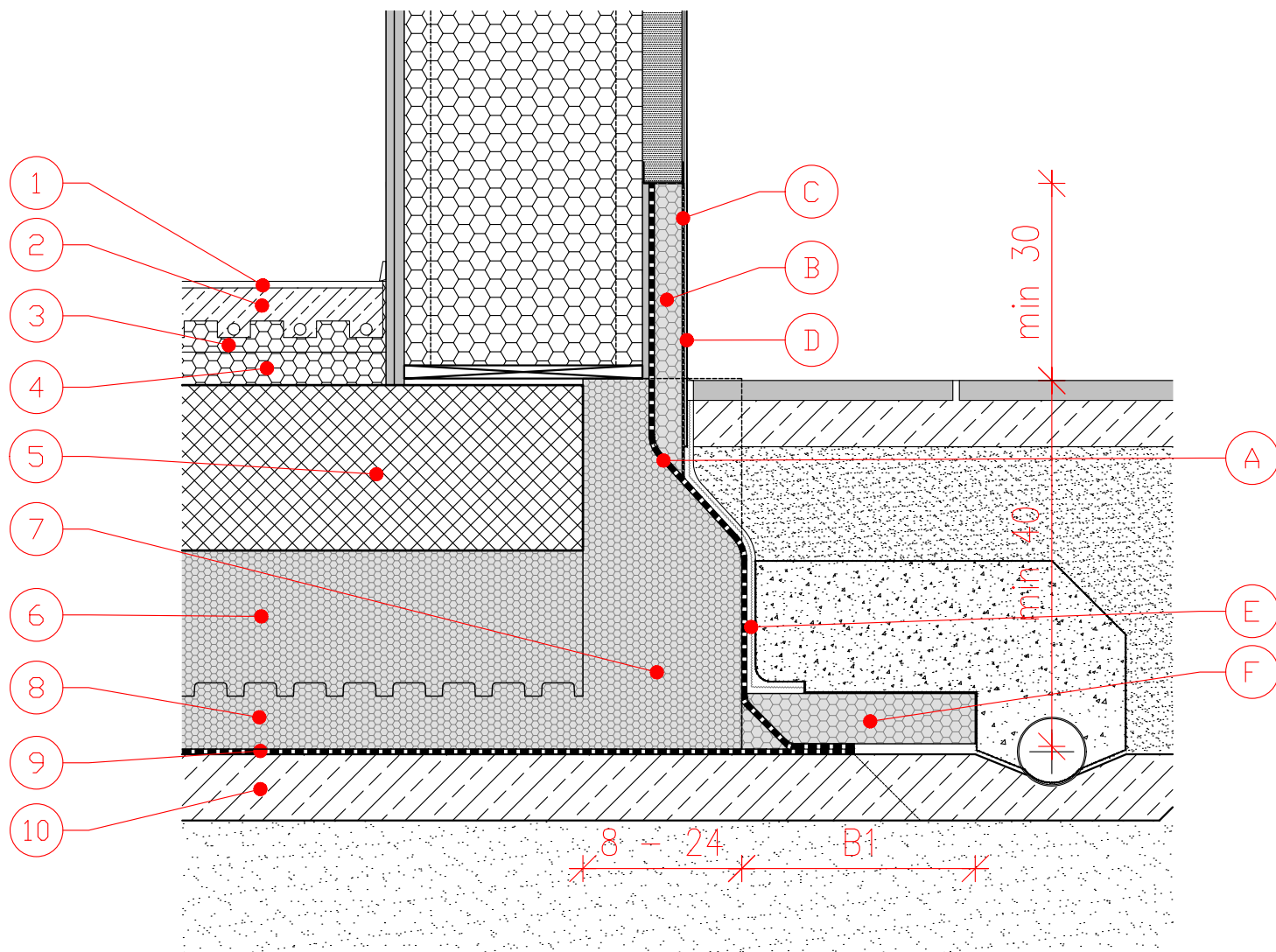


TIMBER FRAME WALL TO JUBHOME BASE IN CASE OF GROUND MOISTURE - PASSIVE ENERGY STANDARD

S 1:10



- | | | | |
|-----|---|----|---|
| 1. | FINAL FLOOR LINING | A. | SELF-ADHESIVE HDPE MEMBRANE |
| 2. | CEMENT- SAND SCREED | B. | EUROTHERM EPS F STRONG |
| 3. | EUROTHERM STIROTAL SILENT, 2,2 + 2,5 cm | C. | HIDROZOL SUPERFLEX, WITH A TOTAL |
| 4. | FLOOR THERMAL INSULATION EUROTHERM EPS 100 | | THICKNESS OF 0.2 cm |
| 5. | RC RAFT FOUNDATION, THICKNESS UP TO 30 cm | D. | KULIRPLAST or A FINISHING FACADE RENDER |
| 6. | JUBHome BASE UPPER LAYER FLOOR ELEMENT, D= 8, 16 or 22 cm | | (ACRYL / SILICON / SILICON NANO) |
| 7. | JUBHome BASE EDGE ELEMENT | E. | PROTECTIVE STUDDED MEMBRANE |
| 8. | JUBHome BASE LOWER LAYER FLOOR ELEMENT, D= 8 | F. | EUROTHERM EPS F STRONG, 8 cm |
| 9. | PLASTOMER BITUMEN WATERPROOFING, 0.4 cm | | |
| 10. | BLINDING CONCRETE | | |