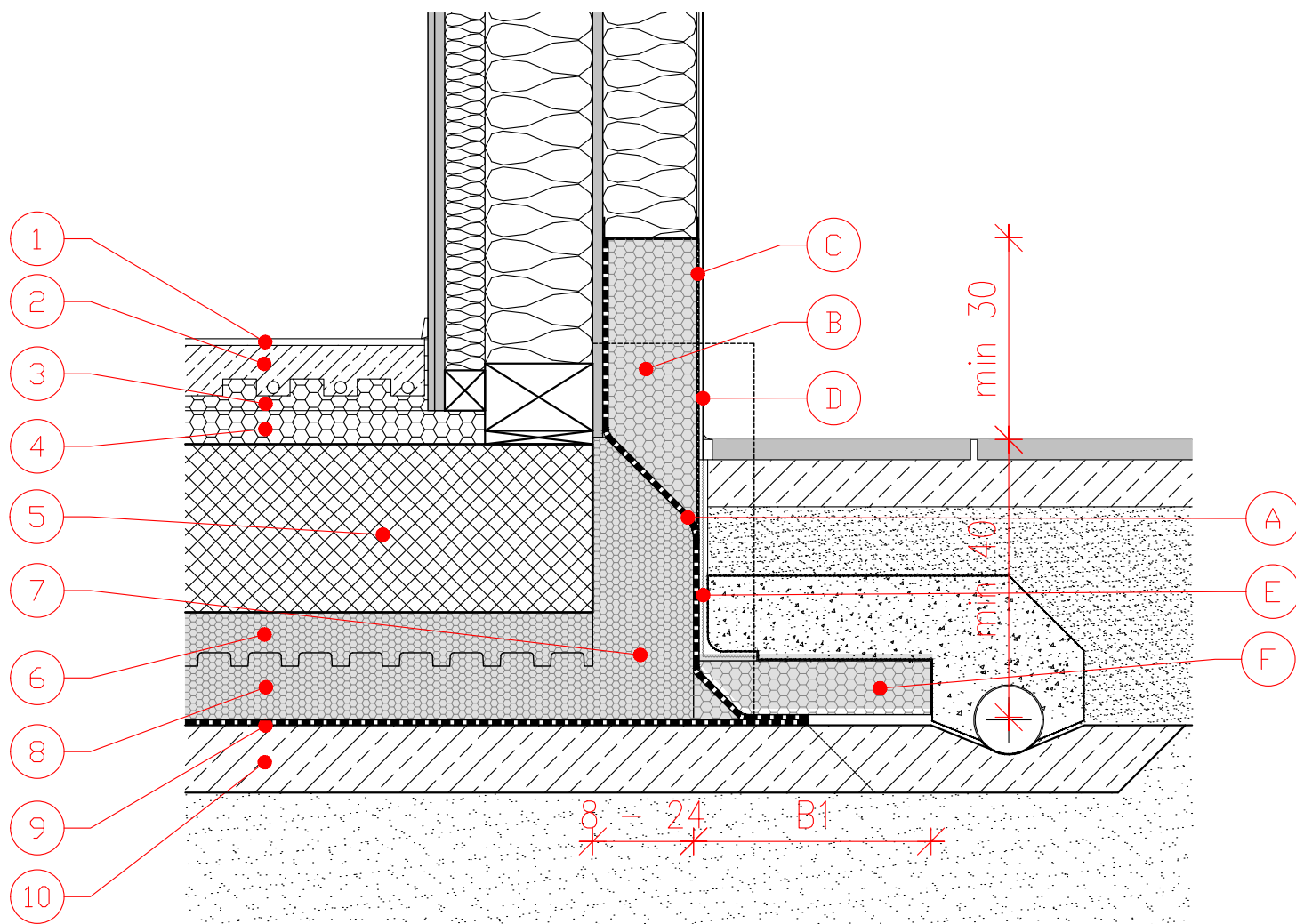


# TIMBER FRAME WALL TO JUBHOME BASE IN CASE OF GROUND MOISTURE - LOW ENERGY STANDARD V1

S 1:10



1. FINAL FLOOR LINING
2. CEMENT- SAND SCREED
3. EUROTHERM STIROTAL SILENT, 2.2 + 2.5 cm
4. FLOOR THERMAL INSULATION EUROTHERM EPS 100
5. RC RAFT FOUNDATION, THICKNESS UP TO 30 cm
6. JUBHome BASE UPPER LAYER FLOOR ELEMENT, D= 8, 16 or 22 cm
7. JUBHome BASE EDGE ELEMENT
8. JUBHome BASE LOWER LAYER FLOOR ELEMENT, D= 8
9. PLASTOMER BITUMEN WATERPROOFING, 0.4 cm
10. BLINDING CONCRETE

- A. SELF-ADHESIVE HDPE MEMBRANE
- B. EUROTHERM EPS F STRONG
- C. HIDROZOL SUPERFLEX, WITH A TOTAL THICKNESS OF 0.2 cm
- D. KULIRPLAST or A FINISHING FACADE RENDER (ACRYL / SILICON / SILICON NANO)
- E. PROTECTIVE STUDDED MEMBRANE
- F. EUROTHERM EPS F STRONG, 8 cm