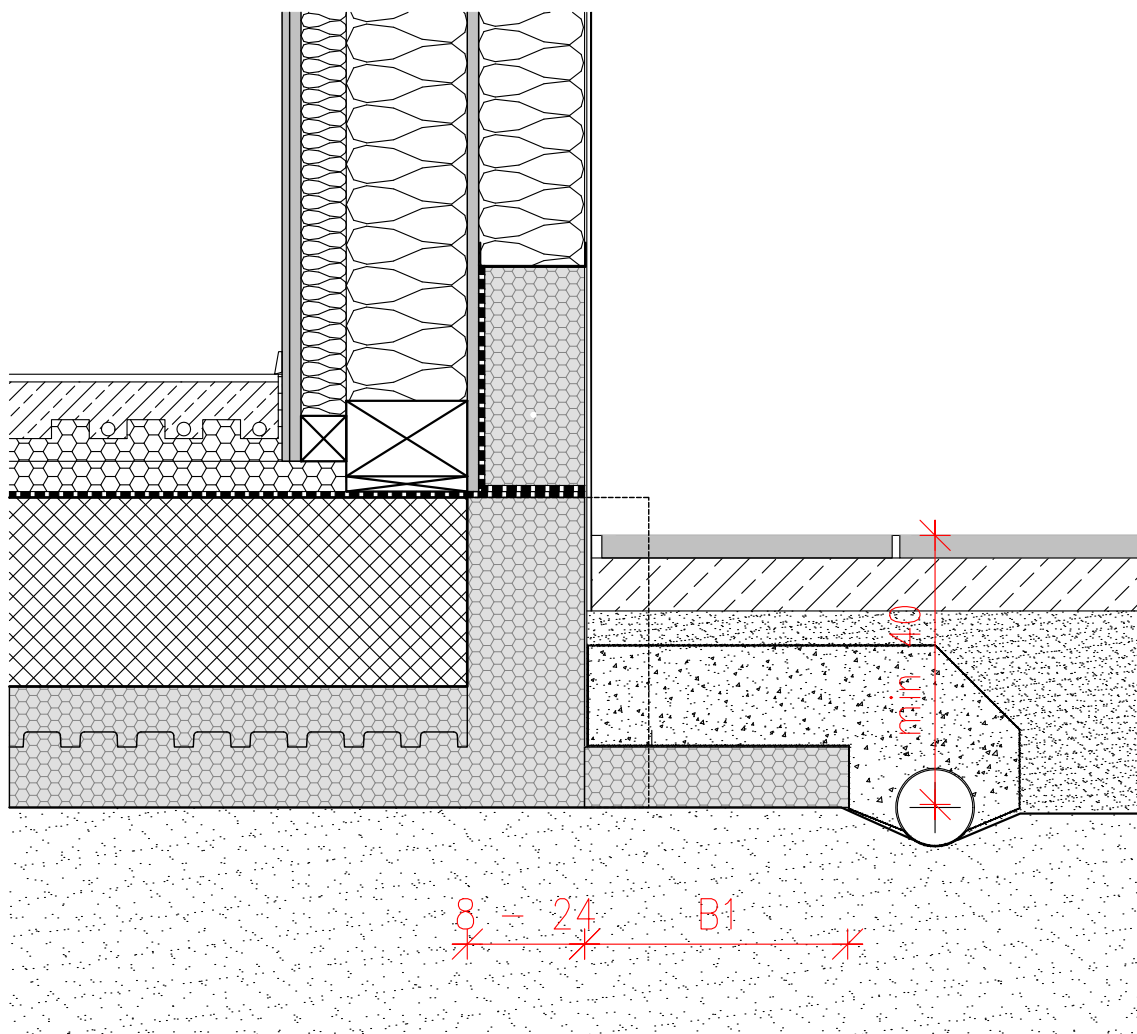


DETAIL NO.: BASE-B-01-5.0  
 TYPE: PREFABRICATED WOODEN, LOW ENERGY WALL  
 DATE: MARCH 2016



## TIMBER FRAME WALL TO JUBHOME BASE IN CASE OF GROUND MOISTURE - LOW ENERGY STANDARD V2

S 1:10



- |  |   |
|--|---|
| 1. FINAL FLOOR LINING  | A. SELF-ADHESIVE HDPE MEMBRANE  |
| 2. CEMENT- SAND SCREED                                       | B. EUROTERM EPS F STRONG  |
| 3. EUROTERM STIROTAL SILENT, 2.2 + 2.5 cm                    | C. KULIRPLAST or A FINISHING FACADE RENDER (ACRYL / SILICON / SILICON NANO) |
| 4. FLOOR THERMAL INSULATION EUROTERM EPS 100                 | D. EUROTERM EPS F STRONG, 8 cm  |
| 5. SELF-ADHESIVE HDPE MEMBRANE                               |   |
| 6. RC RAFT FOUNDATION, THICKNESS UP TO 30 cm                 |   |
| 7. JUBHome BASE UPPER LAYER FLOOR ELEMENT, D= 8, 16 or 22 cm |   |
| 8. JUBHome BASE EDGE ELEMENT                                 |   |
| 9. JUBHome BASE LOWER LAYER FLOOR ELEMENT, D= 8              |   |
| 10. SUBGRADE   |   |