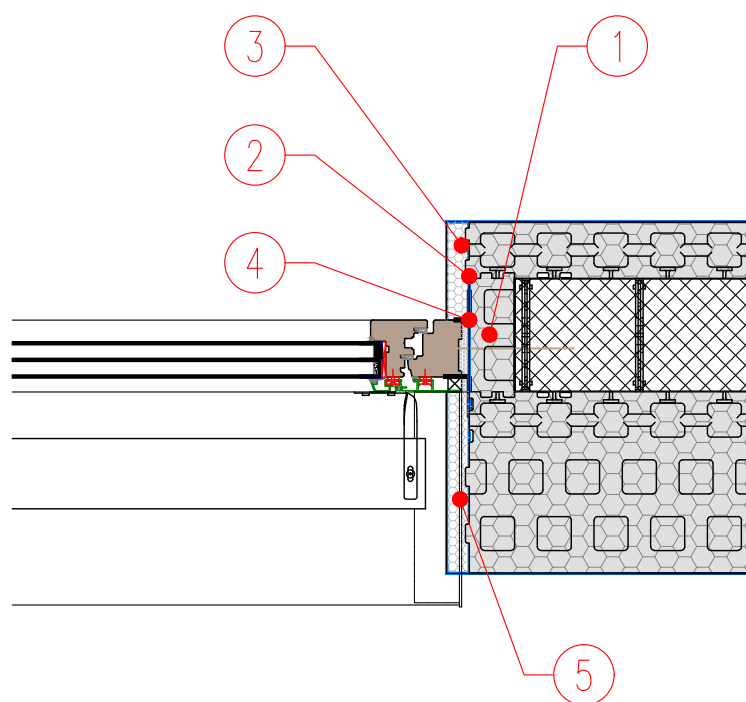


DETAIL NO.: WALL-C-01-6.0
TYPE: ICF
DATE: AUGUST 2018



REVEAL DETAIL, CONSOLE BLIND GUIDES

S 1:10



1. JUBHome WALL END ELEMENT
2. Reveal treated with JUBIZOL ADHESIVE MORTAR before window installation
3. EPS
4. RAL window installation - airtight sealing tape
5. EPS reveal