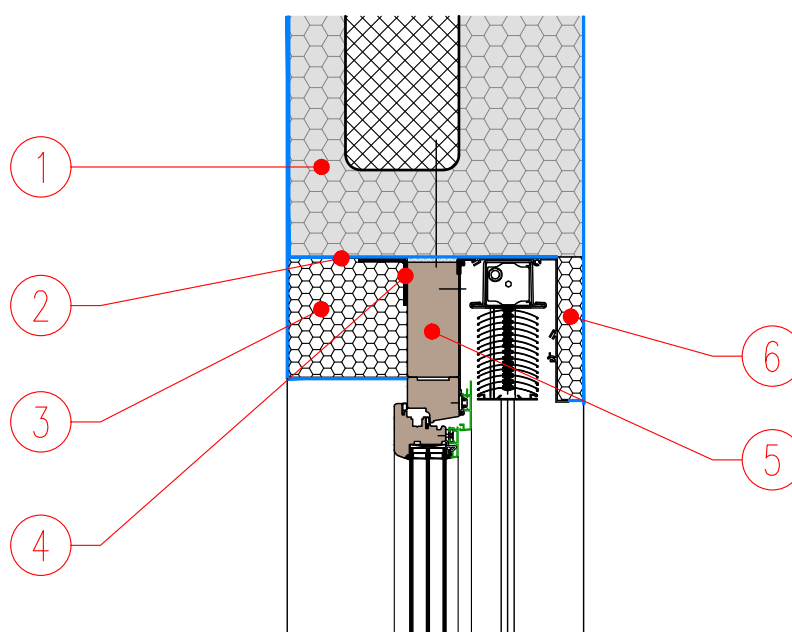


DETAIL NO.: WALL-C-02-1.0
TYPE: ICF
DATE: AUGUST 2018



WINDOW BLINDS WITH THE JUBHome WALL 390 SYSTEM LINTEL AND WINDOW FRAME EXTENSION

S 1:10



1. JUBHome WALL 390 LINTEL element or RC slab
2. Lintel treated with JUBIZOL ADHESIVE MORTAR before window installation
3. Cover for WINDOW FRAME EXTENSION and wall leveling with EPS
4. RAL window installation - airtight sealing tape
5. WINDOW FRAME EXTENSION
6. Gap filled with EPS