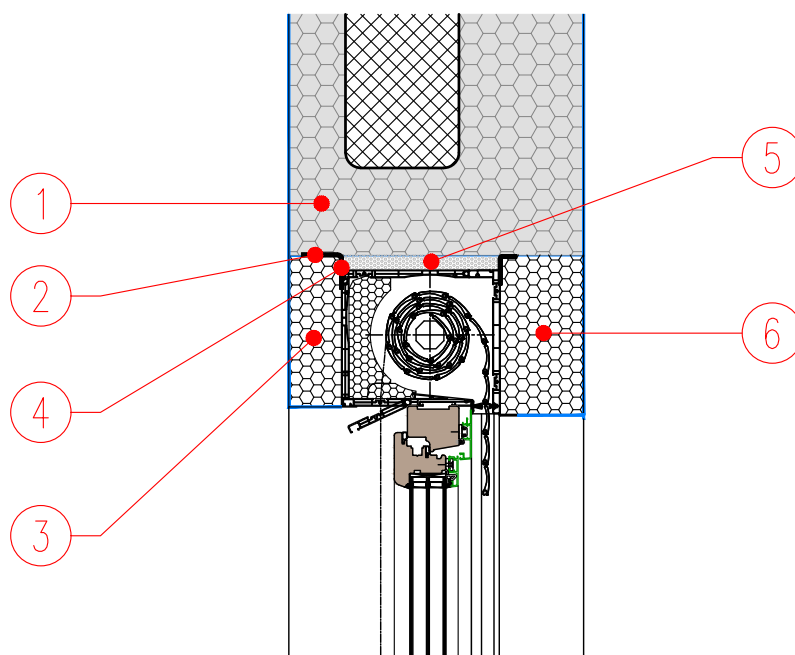


DETAIL NO.: WALL-C-03-1.0
TYPE: ICF
DATE: AUGUST 2018



TOP MOUNTED ROLLER SHUTTER

S 1:10



1. JUBHome WALL 390 LINTEL element or RC slab
2. Lintel treated with JUBIZOL ADHESIVE MORTAR before window installation
3. Cover for roller shutter box and wall leveling with EPS
4. RAL window installation - airtight sealing tape
5. Gap filled with PU foam
6. Gap filled with EPS