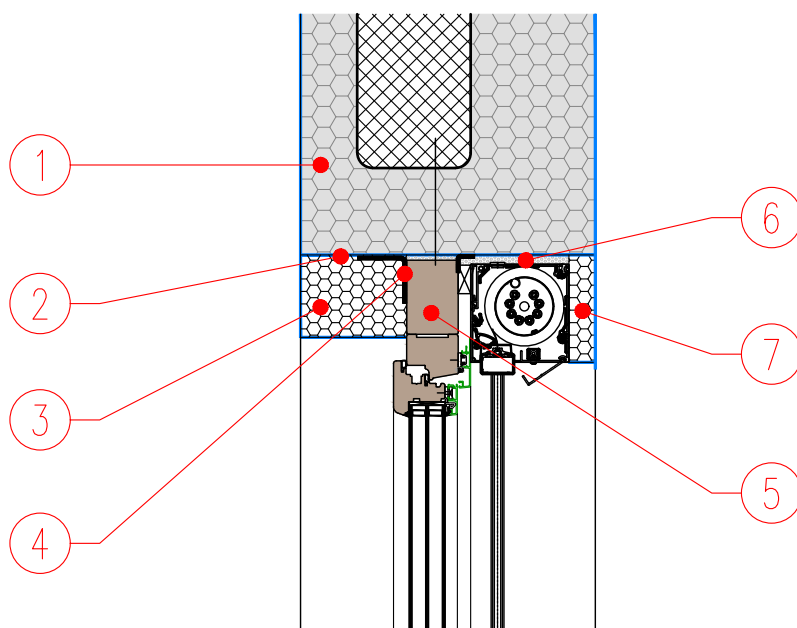


DETAIL NO.: WALL-C-04-1.0
TYPE: ICF
DATE: AUGUST 2018



SCREEN INSTALLATION LINTEL WITH WINDOW FRAME EXTENSION

S 1:10



1. JUBHome WALL LINTEL element or RC slab
2. Lintel treated with JUBIZOL ADHESIVE MORTAR before window installation
3. Cover for WINDOW FRAME EXTENSION and wall leveling with EPS
4. RAL window installation - airtight sealing tape
5. WINDOW FRAME EXTENSION
6. Gap filled with PU foam
7. Gap filled with EPS