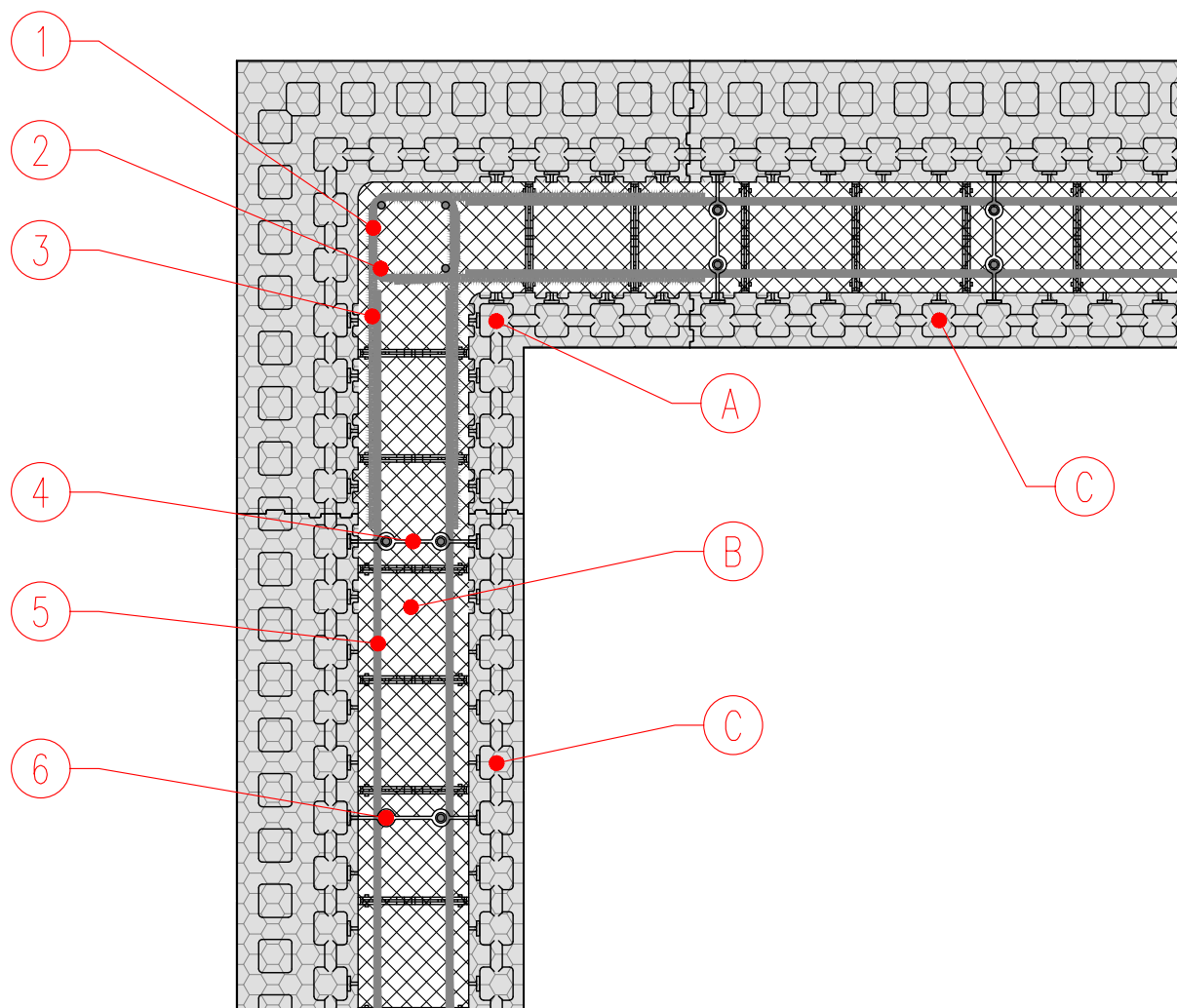


## JUBHome WALL FACADE CORNER

S 1:10

- possible reinforcement placement
- amount of reinforcement as specified by structural engineer



1. Vertical reinforcement cage -  $\Phi$  6 mm stirrups at a spacing of 10 cm
2. Vertical reinforcement cage - 4  $\Phi$  12 mm bars
3. U-shaped stirrups 2  $\Phi$  10 mm
4. Vertical reinforcement bars spacer
5. Horizontal reinforcement 2  $\Phi$  10 mm bars
6. Vertical reinforcement 2  $\Phi$  10 mm bars

- A. JUBHome WALL CORNER
- B. Concrete of quality C25/30, XC2, S4 (with a slump of 20-22 cm), and D8
- C. JUBHome WALL LINEAR