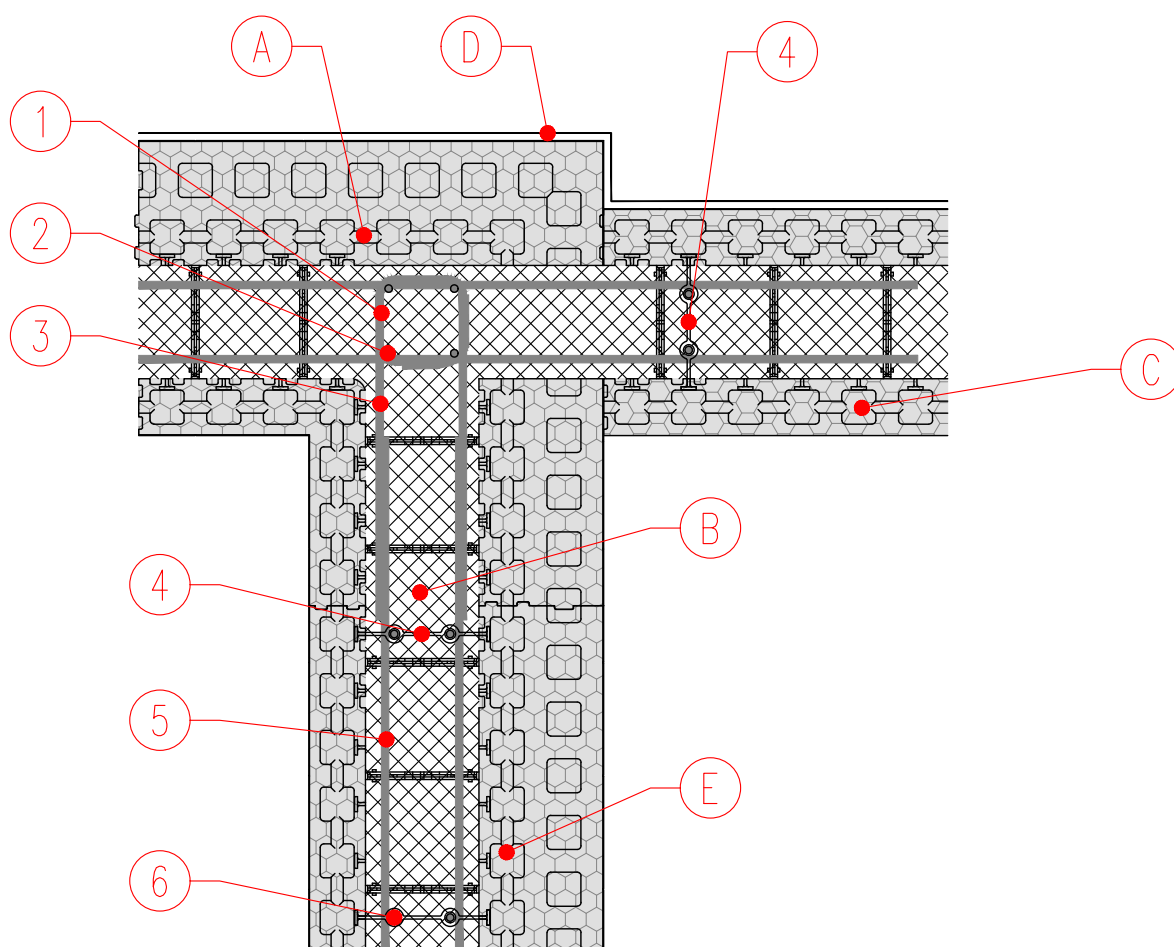


External unheated JUBHome WALL connection to S 1:10
 JUBHome WALL corner-custom made



1. Vertical reinforcement cage - Φ 6 mm stirrups at a spacing of 10 cm
2. Vertical reinforcement cage - 4 Φ 12 mm bars
3. U-shaped stirrup Φ 10 mm
4. Vertical reinforcement bars spacer
5. Horizontal reinforcement 2 Φ 10 mm bars
6. Vertical reinforcement 2 Φ 10 mm bars

- A. JUBHome WALL CORNER factory cut for annex wall connection
- B. Concrete of quality C25/30, XC2, S4 (with a slump of 20-22 cm), and D8
- C. JUBHome WALL LINEAR 300 factory glued to the corner element
- D. JUBIZOL RENDER (BASE COAT + FINISHING COAT)
- E. JUBHome WALL LINEAR 300