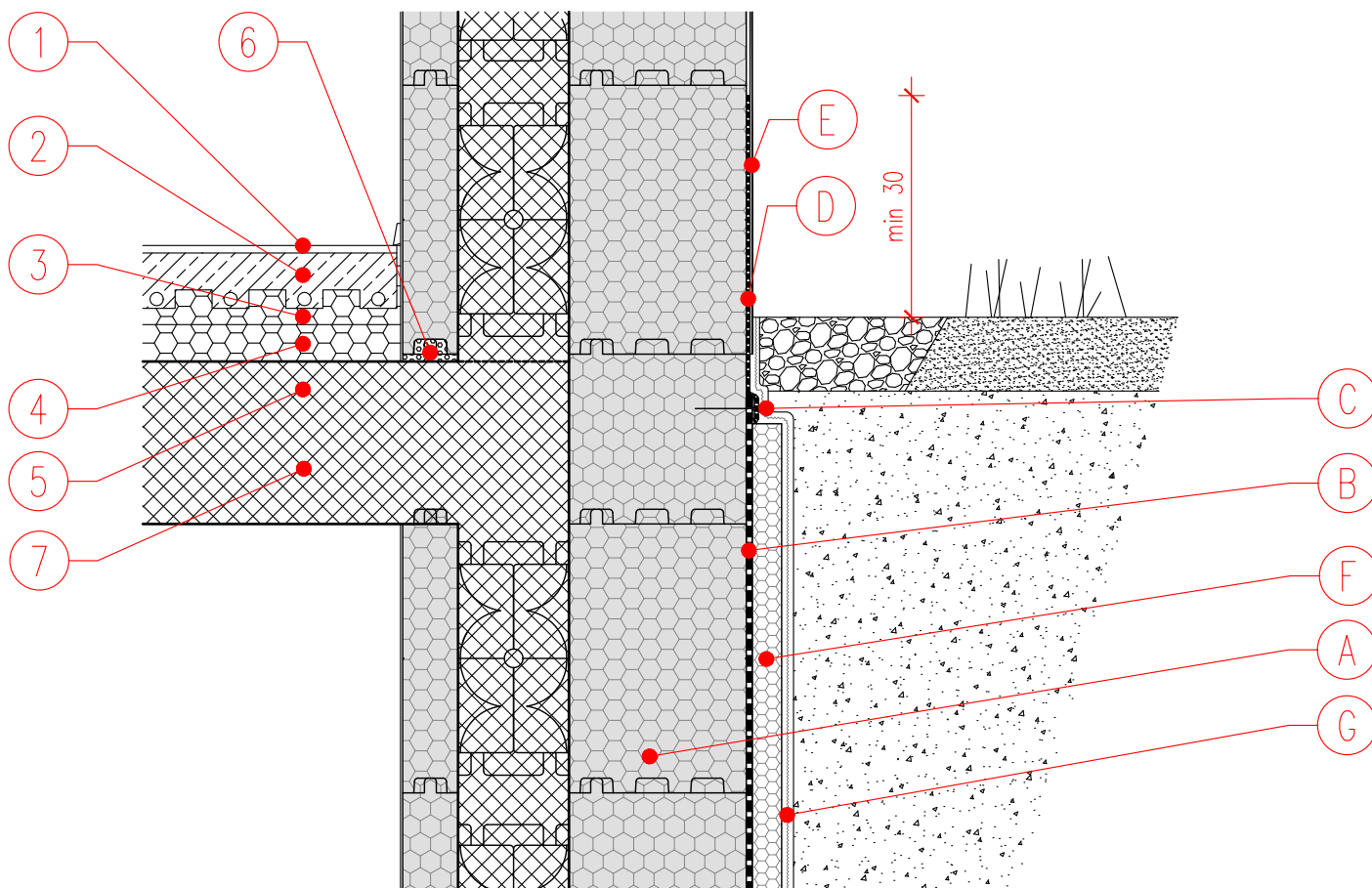


BASEMENT AND GROUND FLOOR CONNECTION

S 1:10



1. FLOORING
2. SCREED
3. EUROTERM STIROTAL SILENT 2,2 + 2,5
4. EUROTERM EPS 100
5. REINFORCED CONCRETE SLAB
6. PU FOAM
7. JUBHome FLOOR SLAB

- A. JUBHome WALL 465
- B. SELF ADHESIVE HDPE MEMBRANE
- C. INOX or PE BATTEN (fixed with screws to PP EPS insert)
- D. HIDROZOL SUPERFLEX total thickness of 3 mm
- E. KULIRPLAST or FINISH RENDER (ACRYL / SILICONE / SILICONE NANO)
- F. EUROTERM EPS F-STRONG-S0 3 cm
- G. SLIP LAYER - reversed DRAINAGE MEMBRANE