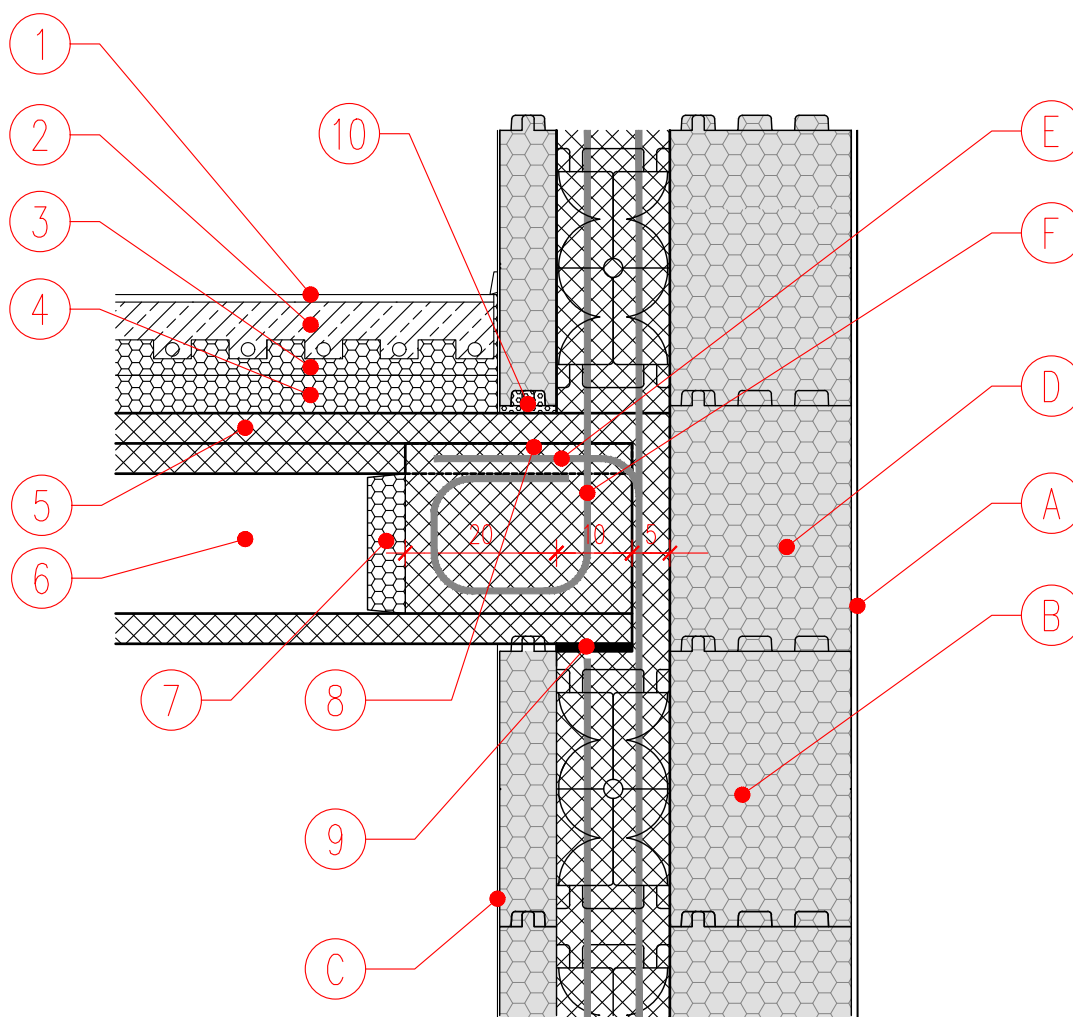


## HOLLOW CORE SLAB CONNECTION TO JUBHOME WALL

S 1:10



1. FLOORING
2. SCREED
3. EUROTHERM STIROTAL SILENT 2,2 + 2,5
4. EUROTHERM EPS 100
5. CONCRETE TOPPING AS SPECIFIED
6. HOLLOW CORE PRECAST PANELS
7. EPS CONICAL INSERT
8. BREAKING OUT THE TOP OF THE HOLLOW CORE AT DOWEL LOCATION AND ALLOW CONCRETE TO INFILL
9. BEARING PAD AS REQUIRED
10. PU FOAM

- A. JUBIZOL RENDER (BASE COAT + FINISHING COAT)
- B. JUBHome WALL 390/465
- C. JUBIZOL BASE COAT + LEVELLING COMPOUND + FINISHING COAT
- D. JUBHome RING ELEMENT
- E. Ø10/ 37,5 cm IN-SITU BENDING
- F. Ø10/ 37,5 cm DOWEL IN CASE OF TWO SIDE REINFORCEMENT LAYER (SEISMIC ZONES)